



ADVANCING
SUSTAINABLY

A LEADER IN THE SUSTAINABLE MANAGEMENT OF FOREST RESOURCES



APRIL Group is a leading producer of fibre, pulp and paper with plantations and manufacturing operations in Riau Province, Indonesia

We make products that are used by millions of people every day in liquid packaging, printing and writing paper, tissues, shopping bags, food packaging, magazines and books. Our products are proudly marketed and sold in more than 70 countries around the world.

We are committed to sustainable forest management as part of a protection-production model that integrates economic and social development with environmental protection. This includes a commitment to zero deforestation, responsible peatland management and close alignment with the United Nation's Sustainable Development Goals (SDGs).

APRIL works with independent advisory groups to oversee the implementation of its Sustainable Forest Management Policy (SFMP) 2.0 and its efforts to advance science-based responsible peatland management.

WORLD CLASS OPERATIONS

Engineered For Efficiency

445,660 hectares of sustainably managed plantations and 370,070 hectares of conservation and restoration forest

Pioneers ways of improving the management of degraded land, with a view to furthering its restoration and conservation commitments

125 R&D professionals employed to help advance a science-based approach to sustainable forestry management

Focused on continually increasing the mill's energy and water-use efficiency, over 80% of our energy is renewable

One of the world's leading paper mills, with an annual capacity of 1.15 million tonnes

Supply sourced from legal, PEFC-certified plantations

One of the world's largest pulp mills, with annual capacity of 1.8 million tonnes



Certifications

Sustainable Plantation Forest Management (SPFM):

Since 2006, PT. Riau Andalan Pulp & Paper (PT. RAPP), the operating arm of APRIL Group, has been certified for SPFM, under the Indonesian Ecolabel Institute (LEI) standards.

Sustainable Production Forest Management (PHPL) certified by Ministry of Environment and Forestry:

PT. RAPP holds PHPL certification, a mandatory certification for all Indonesian forestry companies. This ensures PT. RAPP's compliance with production, ecological, and social requirements set by the Government of Indonesia.

Timber Legality Verification (SVLK):

The SVLK system was jointly developed by the Indonesian Government and the European Union to comply with anti-illegal logging laws. The company's products are accompanied by V-Legal document to certify the legality of the fiber from which the pulp and paper was produced.

OHSAS & ISO:

APRIL Group's operations in Riau Province, Indonesia are certified under OHSAS 18001 (Safety Management Systems), ISO 9001 (Quality Management Systems), and ISO 14001 (Environment Management Systems).

Singapore Green Label:

Our flagship PaperOne product has maintained this certifications since 2013, issued by the Singapore Environmental Council.

MANAGING LANDSCAPES

I-for-I Commitment

APRIL is committed to sustainable forest management as part of a protection-production model that integrates economic and social development with environmental protection. With a combined total of 370,070 ha of conservation and restoration forest areas, we are 83% towards the achievement of our I-for-I commitment, where we protect or conserve one hectare of forest for every hectare of plantation.



Restorasi Ekosistem Riau (RER) is a pioneering private sector-led collaborative project to restore and conserve ecologically important high conservation value peat forest areas on Indonesia's Kampar Peninsula and Padang Island in the Province of Riau, Sumatra, Indonesia.

Established in 2013, RER began with the protection and restoration of 20,000 hectares of peat forest on the Kampar Peninsula. Today, the RER landscape comprises five concession areas totaling **150,693 hectares on the Peninsula and neighbouring Padang Island, operating under 60-year ecosystem restoration** licenses issued by the Indonesian Ministry of Environment and Forestry

RER contributes to our ongoing efforts to **achieve our I-for-I commitment**

SUSTAINABLE FOREST MANAGEMENT

Our Sustainable Forest Management Policy (SFMP) 2.0 includes commitments to no deforestation, responsible peatland management, conservation and restoration, community empowerment and engagement, and verification and transparency. A key element of our operations is our production-protection landscape model. This involves plantations on the perimeter of conservation areas that not only provide protection, but actively fund ecosystem restoration and protection.

Production-Protection



PLANTATION AND LANDSCAPE CONSERVATION APPROACH

Concession Area Guideline in Indonesia

125,000,000ha of forest in Indonesia
68,000,000ha set aside for production forestry
10,800,000ha allocated to pulp and paper sector

70%
Industrial Plantations



30%
Conservation and Other Uses

10%
Conservation

+ 20%
Local Communities
Infrastructure
Others

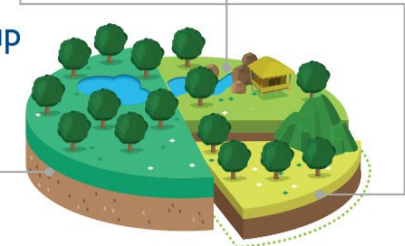
47%
Conservation and Other Uses

24%
Conservation

+ 23%
Local Communities
Infrastructure
Others

APRIL Group Concession Area

53%
Industrial Plantations



445,660ha used for plantations i.e. 54% of Indonesia's forest	370,070ha of forest under conservation and restoration
---	---

PROTECTING THE ENVIRONMENT, SUPPORTING COMMUNITIES

FIRE PROTECTION

FIRE DETECTION AND SUPPRESSION

MORE THAN
US\$9 MILLION
SUPPRESSION RESOURCES
INVESTED IN FIRE



920 RAPID RESPONSE TEAM MEMBERS
INCLUDING **260** FULL TIME
MEMBERS & **724** VOLUNTEER



28 COMMUNITY-BASED FIRE PREVENTION
AND CONTROL GROUPS

39 LOOKOUT
TOWERS

482
WATER PUMPS COMMITTED TO
FIREFIGHTING EFFORTS AND 2 AIRBOATS
FOR FIRE SUPPRESSION OPERATIONS



2 HELICOPTERS FOR FIRE SUPPRESSION
OPERATIONS



FIRE-FREE VILLAGE PROGRAMME (FFVP)

ENGAGED WITH
77 COMMUNITIES

SPANNING MORE THAN
622,112 HA

REDUCING BURNT AREA BY
90%



THE AREA OF BURNT LAND
AT PARTICIPATING
VILLAGES SAW A DECREASE
FROM **390.6ha** in 2016
to **131ha** in
2018 REPRESENTING A
REDUCTION OF
50%



COMMUNITY

EDUCATION

20,707
SCHOLARSHIPS PROVIDED
TO PRIMARY & SECONDARY
SCHOOL STUDENTS



32,024
BOOKS DONATED TO
SURROUNDING AREAS



2,659
TEACHERS
TRAINED IN CONTEXTUAL
TEACHING & LEARNING



58 SCHOLARSHIPS
OFFERED TO LOCAL HIGH
SCHOOL GRADUATES TO
PURSUE AGRICULTURAL
STUDIES DIPLOMAS IN INSTIPER



COMMUNITY HEALTHCARE

187,114
INDIVIDUALS WERE
SERVED BY APRIL'S
GROUP HEALTH
PROGRAMME FROM
1999-2017



152 HEALTH, WATER
AND SANITATION
PROJECTS COMMITTED



SOCIAL INFRASTRUCTURE

SUPPORTED THE BUILDING OF:

663
WORSHIP &
RELIGIOUS SCHOOLS



443
PUBLIC
SCHOOLS



41
SPORTING
FACILITIES



ECONOMIC

LIVELIHOOD

7,756
EMPLOYEES

19,301
CONTRACTORS



UP TO **90,000**
EMPLOYMENT OPPORTUNITIES

145
FARMER GROUPS SUPPORTED
WITH AGRICULTURAL MATERIALS
IN 2018 UP FROM **66** IN 2017

202
FARMERS TRAINED
TO CULTIVATE
FARMLAND IN 2018, UP
FROM **167** IN 2017



INTEGRATED
FARMING SYSTEM

(IFS) COVERS
>2,300ha



303 SMEs
WERE CONTRACTED BY
APRIL AND SUPPLY
PARTNERS IN 2018



>300
FARMERS GROUPS
HAVE RECEIVED TRAINING
AT OUR TRAINING
CENTER



Sources: Sustainability Report 2018

PULP PRODUCTS

PULP PRODUCTS

APRIL Group is the leading Bleached Hardwood Kraft Pulp supplier in Asia and uses advanced manufacturing processes to produce pulp of premium quality. Our plantation pulp products are PEFC certified and PEFC Controlled Sources as they are sourced from sustainably managed forest and from non controversial sources, which uphold ecological, economic and social values.

Pulp is the basis of many paper products, ranging from the corrugated boards used in factories to our daily necessities like paper, tissue, tea bags and magazines. In order to meet the different end-use ever demanding requirements of fibres, we customize and develop a series of BP products known as the "Best Pulp Series" (BPS) for tissue, specialty paper, Board and Printing & Writing. APRIL pulp has been used globally in a wide variety of applications due to its excellent formation and opacity, low coarseness and its balanced fiber properties.

APRIL provides consultative and tailored-made solutions at the customer's premises combining and matching its customized pulp with its deep understanding in process and application know-how. By systematically analysing our customers' entire paper making process, from furnish, raw material inputs, and manufacturing to finished product requirements, APRIL paper technologists aim to partner with our customers through the innovative use of fiber, identifying optimization opportunities for improved Total Cost of Ownership (TCO), as well as enhanced product quality in the production line. This business model of QPC - Quality, Productivity and Cost serve us as our key drivers of our business to create value for our customers.

HOW IS PULP MADE?

To make pulp, small wood chips are processed and treated to create a mixture. The mixture is then cooked to release the natural glue that bonds wood fibres together. The mixture is washed for further processing and bleaching to ensure that the final product is whiter, more absorbent and resistant.

The principal by-product from cooking of wood chips is lignin, which in the form of black liquor is used as fuel in the recovery boilers to generate steam and power, which are then used to power up the production process.

When the pulp is dried, finished and baled, it is shipped to our customers to make it into a wide variety of end products.



PAPER PRODUCTS

PAPER PRODUCTS

PaperOne™, a premium quality paper brand designed for the most demanding high-speed printing and copying tasks, was launched by APRIL Group on 6 May 1998.

Determined to make PaperOne™ a clear industry leader, we benchmarked our home, office and commercial printing paper products against top international paper brands across all areas, including thickness, opacity and archival qualities. The moisture-proof wrappers of PaperOne™ products were meticulously designed, from the choice of colors and logo typeface to the strategic placement of product information. We also ensured that our PaperOne™ carton boxes would be reusable, ergonomic and lightweight.

PaperOne™ debuted in the most demanding international markets in 1998, launching in the USA, Europe and Japan. Today, our global brand PaperOne™ is sold in more than 70 countries, delivering consistent professional printing quality with minimal environmental impact.

In recognition of its environmental stewardship, APRIL Group was awarded the PEFC Sustainable Forest Management certification in June 2015 for making products from 100% renewable fibers and sustainable sources.

PaperOne™ offers a comprehensive range of Office paper products, as well as Printing & Publishing paper and Digital paper for commercial purposes (offset, digital, hybrid printing and converting), available in both roll and folio form.



Printing & Publishing Paper



Offset premium paper for modern offset machines



For writing grade products



Economical paper for printers and copiers



or wide range offset machines

Digital Paper



For hybrid printing (laser & laser/inkjet) enhanced with ProDigi™ HD Print Technology



For modern high speed continuous lead-inkjet printers enhanced with ProDigi™ HD Print Technology



For plotters rolls and laser printing products

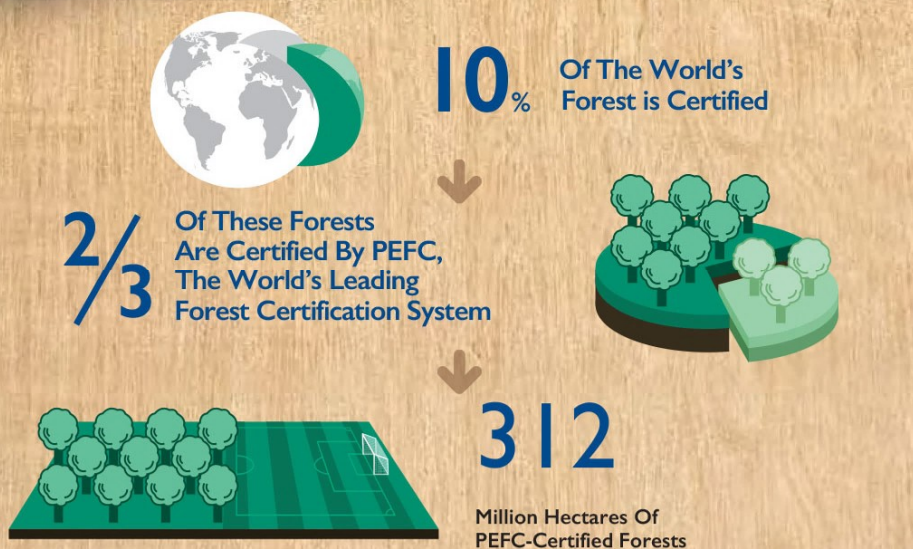
PROGRAMME FOR THE ENDORSEMENT OF FOREST CERTIFICATION (PEFC)

APRIL Group's pulp and paper products are PEFC-certified.

PEFC-certification is a transparent system of forest inspection plus a means of tracking timber and paper, from harvested tree through to the finished product.

PEFC is your assurance that wood for pulp and paper products comes from forests that are sustainably managed.

WORLD FOREST CERTIFICATION



Developed Countries Account For **90%** of PEFC-Certified Forests

- Developed Country
- Developing Country
- APRIL Group is the first to achieve PEFC Sustainable Forest Management Certification in Indonesia



BENEFITS OF BUYING PRODUCTS WITH THE PEFC LABEL:



- You demonstrate your support for the sustainable management of forests around the world.
- You help to protect forests for present and future generations.
- You help to promote the responsible sourcing of pulp and paper products.
- You help to combat illegal logging.

87%

of Customers Trust PEFC Labels To Make Informed Choices*

resulting in an increased demand for sustainable paper and procurement

*PEFC/GfK Global Consumer Survey – October 2014

PEFC's Sustainable Forest Management (SFM) Certification

recognises forestry operations that maintain a forest's ecological, social and economic values while the Chain of Custody (CoC) certification plays an important role in ensuring the traceability of wood from its origin through the entire supply chain, from the forests to you.

